



**NEW!**

## ENGINE

Model	: ISUZU AR-4HK1X
Type	: Water cooled diesel engine, 4 cycles, 4 cylinders, line-type, direct injection, turbocharger and intercooler
Power	: 172 HP (128 kW) @ 2000 rpm / SAE J1995 (Gross) : 162 HP (121 kW) @ 2000 rpm / SAE J1349 (Net)
Max. Torque	: 670 Nm @ 1600 rpm (Gross) : 649 Nm @ 1600 rpm (Net)
Displacement	: 5193 cc
Bore and Stroke	: 115 mm x 125 mm
This new engine complies with the Emission Regulations U.S EPA Tier 4 Final and EU Stage IV	

## LOWER STRUCTURE (CHASSIS)

Chassis	: Box shaped, reinforced lower chassis, front dozer blade and rear outriggers (stabilizers) as standard figures.
Axles	: The pivot pin mounted front axle allows two options: 8° in each direction for best matching conditions, or could be locked at any desired position for perfect stability.
Tires	: 11,00 - 20 (16 pr)

## CAB

<ul style="list-style-type: none"> <li>• Improved operator's all round visibility</li> <li>• Increased cabin internal space</li> <li>• Use of six viscomount cabin mountings that dampen the vibrations</li> <li>• High capacity A/C</li> <li>• 8" touch TFT screen</li> <li>• Opera Control System</li> <li>• Cooled storage room</li> <li>• Glass holder, book and object storage pockets</li> <li>• Pool type floor mat</li> <li>• Improved operator's comfort through versatile adjustable seat</li> </ul>
--

## STEERING SYSTEM

The "orbitrol" type steering system controls a steering cylinder located on the front axle. Minimum turning radius is 6.800 mm.

## TRAVEL AND BRAKERS

Travel	: Fully hydrostatic
Travel Motors	: Axial piston type
Reduction	: 2 stage planetary gear
Travel Speed	
High Speed	: 30 km/h
Low Speed	: 7,5 km/h
Max. Drawbar Pull	: 11.080 kgf
Gradeability	: 29° (%58)
Parking Brake	: Hydraulic, disc type with automatic warning
Service Brake	: Fully hydraulically operating disc type brakes with spring return, independent for front and rear axles.

## LUBRICATION

Centralized lubrication system is provided for lubrication all difficult-to-reach parts on the components, such as boom and arm

## HYDRAULIC SYSTEM

Main Pump	
Type	: 2 axial piston type pumps with double variable displacement and inclined plate
Max. Flow Rate	: 2 x 233 L/min
Pilot Pump	: Gear type, 20 L/min
Working Pressures	
Cylinders	: 350 kgf/cm <sup>2</sup>
Power Boost	: 370 kgf/cm <sup>2</sup>
Travel	: 360 kgf/cm <sup>2</sup>
Swing	: 305 kgf/cm <sup>2</sup>
Pilot	: 40 kgf/cm <sup>2</sup>
Cylinders	
Boom	: 2 x $\varnothing$ 120 x $\varnothing$ 85 x 1.300 mm
Arm	: 1 x $\varnothing$ 135 x $\varnothing$ 95 x 1.520 mm

## OPERA CONTROL SYSTEM

<ul style="list-style-type: none"> <li>• Easy-to-use control panel and menu</li> <li>• Improved fuel economy and productivity</li> <li>• Maximum efficiency by selection of power and work modes</li> <li>• Overheat prevention and protection system without interrupting the work</li> <li>• Automatic powerboost switch-on and switch-off</li> <li>• Automatic electric power-off</li> <li>• Maintenance information and warning system</li> <li>• Error mode registry and warning system</li> <li>• Ability to adjust hydraulic flow from Opera screen</li> </ul>	<ul style="list-style-type: none"> <li>• Maintenance information and warning system</li> <li>• Automatic powershift to improve performance</li> <li>• Selection of multi-language on control panel.</li> <li>• Real time monitoring of operational parameters such as pressure, temperature, engine load</li> <li>• Anti-theft system with personal code</li> <li>• Possibility to register 26 different operating hours</li> <li>• Rear-view, arm-view camera (Optional)</li> <li>• Hidromek Smartlink (Optional)</li> </ul>
---	---

## SWING SYSTEM

Swing Motor	: Axial piston type integrated with shock absorber valves
Reduction	: 2 stage planetary gear box.
Swing Brakes	: Hydraulic multi disc type.
Swing Speed	: 12,6 rpm

## FILLING CAPACITIES

Fuel Tank	: 345 L	Engine Oil	: 27,3 L
Hydraulic Tank	: 160 L	Engine Cooling Sys	: 29,3 L
Hydraulic System	: 318 L		

## ELECTRICAL SYSTEM

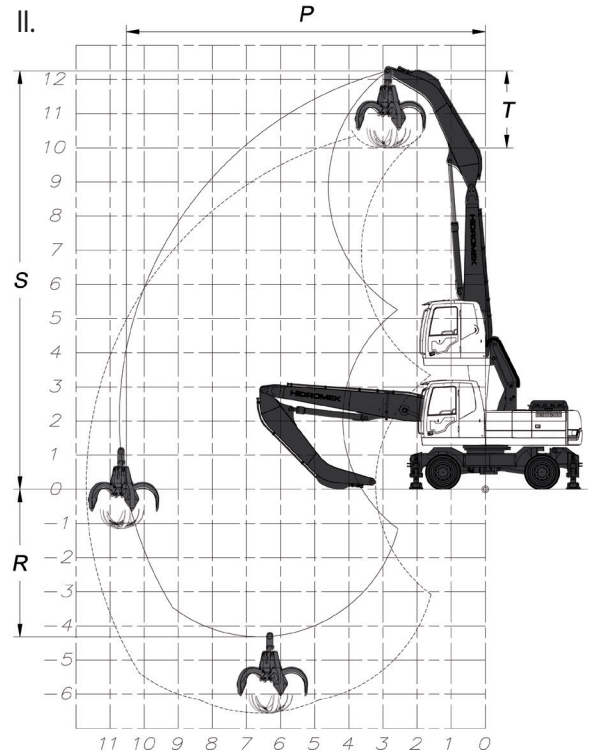
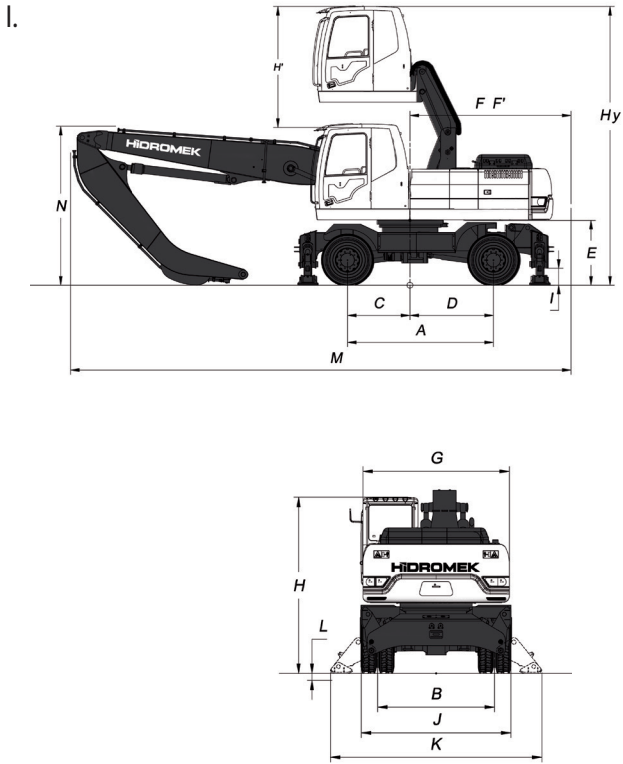
Voltage	: 24 V
Battery	: 2 x 24 V x 150 Ah
Alternator	: 24 V / 50 A
Starting Motor	: 24 V / 5,0 kW

## OPERATING WEIGHT

Standard machine operating weight	: 23.550 kg
-----------------------------------	-------------

Operational weight, complying with the ISO 6016 standards, includes full fuel tank, hydraulic system and other liquids, 75kg operator weight and standard equipped machine weight. Optional equipments are not included.

# HMK210 W MH H4



## I. GENERAL DIMENSIONS

Boom Dimension	6.600 mm
Arm Dimension	4.600 mm
A - Axle Distance	2.850 mm
B - Thread	1.874 mm
C - Rotation Axis - Front Axle Distance	1.500 mm
D - Rotation Axis - Rear Axle Distance	1.350 mm
E - Upper Chassis to Ground Clearance	1.290 mm
F - Counterweight Distance	2.850 mm
F' - Counterweight Turning Radius	2.880 mm
G - Upper Frame Width	2.500 mm
H - Cab Height	3.350 mm
H' - Cab Rising Height	2.400 mm
H <sub>y</sub> - Total Cab Height	5.600 mm
I - Outrigger Ground Clearance	335 mm
J - Width at Tires	2.500 mm
K - Outrigger Width (Overall)	3.800 mm
L - Outrigger Digging Depth	130 mm
M - Overall Length / Transport	9.650 mm
N - Boom Height / Transport	3.550 mm

## II. WORKING DIMENSIONS

Boom Dimension	6.600 mm
Arm Dimension	4.600 mm
O - Maximum Reach Distance	11.020 mm
P - Maximum Reach at Ground Level	10.820 mm
R - Maximum Depth	4.400 mm
S - Maximum Height	12.320 mm
T - Polyp-Grab and Equipment Height	2.230 mm

## HIDROMEK®

**FACTORY - HEAD OFFICE**  
 Ahi Evran OSB Mahallesi Osmanlı Caddesi No:1 06935 Sincan / ANKARA / TURKEY  
 Tel: (+90) 312 267 12 60 Fax: (+90) 312 267 12 39  
[www.hidromek.com](http://www.hidromek.com)

**Notice:**  
 Hidromek has the right to modify the specifications and design of the model indicated on this brochure without prior notice.